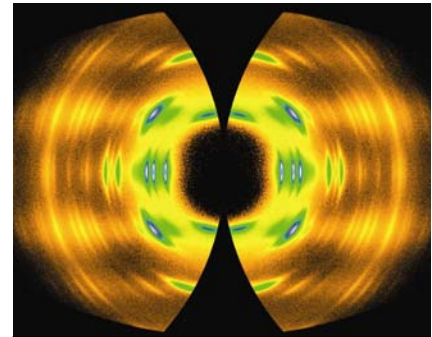


# Science as Art: A Visualization Challenge at Clemson University

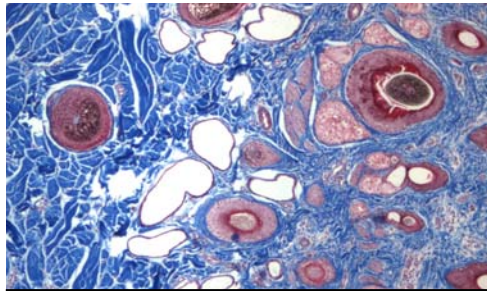
The images produced during scientific enterprise are powerful tools to communicate technical and often complex concepts. These images serve as a source of excitement and motivation for the next generation of innovators and researchers.

Clemson students, faculty and staff from all disciplines are invited to submit original works to **Science as Art**, a campus-wide exhibit of scientifically significant and artistically appealing images. Entries can be produced by individuals or teams; multi-disciplinary collaboration is encouraged.

**Entry categories:** illustrations, photographs, explanatory graphics, non-interactive electronic media and interactive electronic media.



Wide angle X-ray pattern of isotactic polypropylene fibers; Paulo Lopes and Martin Beagley, CAEFF



Histological section of bovine tissue with Masson's Trichrome stain; Cheryl Gomillion, Bioengineering

**Formats:** All entries must be in electronic format; the criteria for content and formats are available on the Science As Art website: <https://caeff.ces.clemson.edu/SAA/welcome.htm>.

These are based on the NSF sponsored "Science and Engineering Visualization Challenge":

[http://www.nsf.gov/news/special\\_reports/scivis/index.jsp?id=challenge](http://www.nsf.gov/news/special_reports/scivis/index.jsp?id=challenge).

If desired, original works can also be submitted, and will be displayed in the Cooper Library during April. Electronic entries will be uploaded to be viewed on the Clemson University website.

**Judging:** Art and science experts from the community will judge the entries based on scientific merit, the challenges of producing the image, and their inherent beauty. One winner per category will be selected, as well as a "People's Choice" award based on input from Clemson students, faculty and staff.

**Winners:** Winners will receive \$50 gift certificates and tickets to the spring banquet for the Clemson chapter of Sigma Xi, The Scientific Research Society. Winning entries will be published in *Clemson World*, and will be featured on the Clemson University website.

**Deadlines:** All entries must be submitted to the CAEFF office, 301 Rhodes, by **4:00 Wednesday, March 29, 2006**. The winners will be announced at the Sigma Xi spring banquet during April 2006.

#### Sponsors:

College of Agriculture, Forestry and Life Sciences  
College of Architecture, Arts and Humanities  
College of Business and Behavioral Science  
College of Engineering and Science  
College of Health, Education and Human Development  
Center for Advanced Engineering Fibers and Films (CAEFF)  
Clemson Chapter of Sigma Xi



Immature bark lice (Psocidae); Eric Paysen, Entomology, Soils and Plant Sciences